








Product List

The components we provide

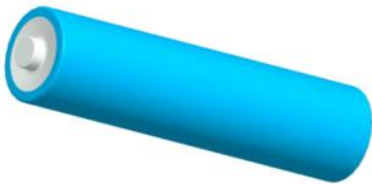
	Joystick module*2		Arm HAT*1
	A pair of Acrylic sheet		SG90 Servo*3
	18650 battery case*1		AD002 Servo*1
	turntable*1		5-Pin wire*2
	P1.2*4mm self-tapping screw*17		M2*8mm round head screw *8
	M2 nut*8		M3*6mm round head screw*12

	M2.5*6mm round head screw*8		M2.5*30mm copper column*4
			M2.5*14+6mm copper column*4
	M2.5*10mm round head screw*8		M2.5 nut*8
	M3*10mm round head screw*2		M3*10mm countersunk head screw*2
	M3*8mm countersunk head screw*6		M3*12mm countersunk head screw*4
	M3*18mm countersunk head screw*1		M3 mm nut*4
	M3 mm self-locking screw*7		M3*20mm copper column*4
	M3*30MM aluminium column*2		M3*37MM aluminium column*2
	φ3*3mm nylon column*12		M3*6 black nylon stud*4
	M3*5 black nylon screw*8		φ3*8*4 flange bearing F693ZZ*4

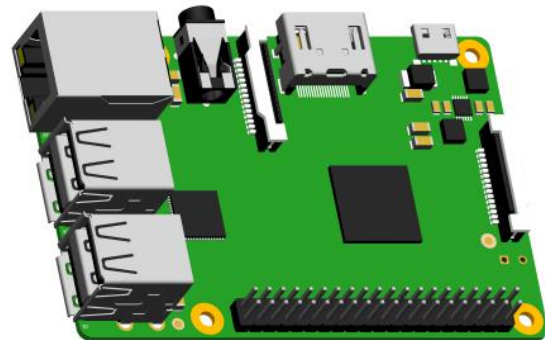
	M2 Phillips screwdriver		M3 Phillips screwdriver
	5.5-4 spanner		M3 Flat pad*3

Items you need to buy extra

18650 Battery X2



Raspberry Pi X1



The Raspberry Pi also requires an SD card of 16GB and above and a power cable.

18650 battery specifications: **maximum continuous discharge current: 4A or more.**

